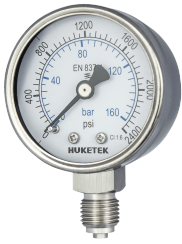


## 261 Series - Press On All SS Standard Pressure Gauge

261 Series is all SS case with press on SS ring.



261A



261B



261C



261F

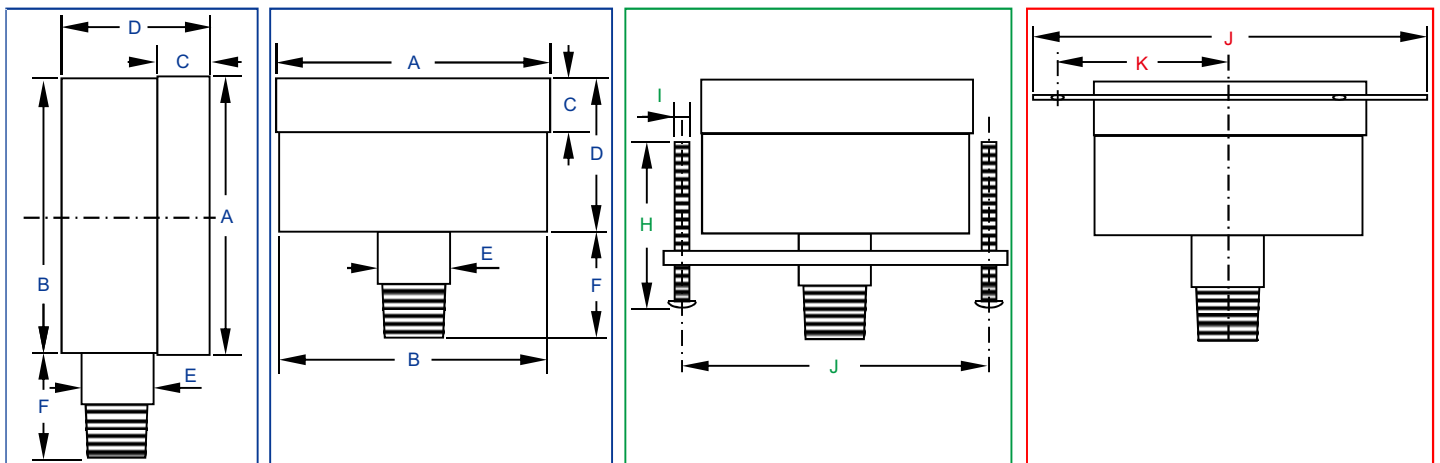
### Description

261 series is designed for critical environment or high pure devices with long durability, it has SS304 housing and SS316 internals, can be used in most corrosive atmospheres and liquid, food industry, water supplier, etc.

### Material Feature

<b>Case</b>	SS304	<b>Connection</b>	SS316 NPT/BSP/BSPT/Metric
<b>Ring</b>	SS304	<b>Thread Size</b>	1/8", 1/4", 3/8", 1/2"
<b>Window</b>	Polycarbonate or Tempered Glass	<b>Connection Type</b>	1 Part
<b>Dial</b>	Aluminium	<b>Movement</b>	SS304
<b>Pointer</b>	Aluminium	<b>Bourdon Tube</b>	SS316
<b>Accuracy</b>	2.0%/1.6%/1.0%*	<b>Pres. Range</b>	VAC~9PSI~15000PSI

\*90% of the gauges are 1.0% accuracy under automated calibration technology even for 40mm.



### DIMENSIONS

Code	Dia (mm)	Size (mm)											
		A	B	C	D	E	F	G	H	I	J	K	L
A261	40	42.0	41.0	8.0	24.0	11.0	17.0	48.0	37.0	4.0	60.5	26.3	-
B261	50	52.5	51.3	10.0	28.0	14.0	23.0	60.0	37.0	4.0	74.2	31.8	-
C261	63	63.2	62.0	10.0	28.0	14.0	23.0	71.0	37.0	4.0	84.0	36.7	-
D261	75	77.0	75.0	11.0	29.5	14.0	23.0	-	-	-	96.0	42.7	-
E261	80	79.0	77.6	11.0	29.5	14.0	23.0	-	-	-	105.5	46.8	-
G261	100	100.0	98.5	13.0	36.0	22.0	28.5	-	-	-	131.5	59.3	-